

April 30, 2015

Mr. Danny Lee
Madison County - Buildings and Grounds
PO Box 608
Canton, Mississippi 39046-0608

Re: Madison County Courthouse
Repairs and Restoration
Canton, Mississippi
Paramount Construction Group, LLC's Proposal Review
BSA Project #1208

Mr. Lee:

Our office is in receipt of Paramount Construction Group, LLC's submitted Proposals for the additional exterior paint (and associated plaster repairs) and for the addition of Floor Boxes in the Courtroom. Summary of Proposals and Review are as follows:

Proposal for Exterior Painting: As requested by the County, the scope of work for this proposal is to paint remaining exterior surfaces, not originally covered in the documents. The proposal also includes necessary plaster repairs in preparation for the paint. Painting of the cupola structure is not included as it was painted as part of a previous renovation. The submitted Proposal is in the amount of \$78,612.00 and requests an additional 7 weeks be added to the construction contract time to perform this work. We have discussed with Paramount Construction Group and reviewed all submitted back-up documentation and believe the submitted price for the proposed additional work is a fair cost. See Attached Proposal.

Proposal for Courtroom Electrical Floor Boxes: As requested by the County, the scope of work for this proposal is to install a total of (8) Electrical Floor Boxes in the Courtroom to accommodate Electrical Power, Data and Media Wiring to the Judge's Bench, Witness Stand, Attorney's Tables, Podium, Conference Table, Juror's Box and Court Reporter's Table in preparation for future Courtroom Activities. The submitted Proposal is in the amount of \$14,325.00. No additional days were requested to perform this work. We have discussed with Paramount Construction Group and reviewed all submitted back-up documentation and believe the submitted price for the proposed additional work is a fair cost. See Attached Proposal.

If the County elects to proceed with the Proposals, a formal Change Order will be prepared to add this work and associated costs and days to the construction contract.

Please contact us if you have questions or need any additional information.

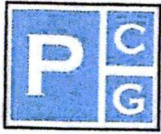
Sincerely,


Craig E. Bjorgum, AIA
Belinda Stewart Architects, PA

Cc: BSA Job File

Attachments

61 North Dunn Street, P.O. Box 867
Eupora, Mississippi 39744
662.258.6405 & 662.258.6452 fax
bsa@belindastewartarchitects.com
www.belindastewartarchitects.com



PARAMOUNT
CONSTRUCTION
GROUP, LLC

234 West School Street, Suite B • Ridgeland, MS 39157 • 601-427-5454 office • 601-427-5456 fax

April 29, 2015

Craig Bjorgum
Belinda Stewart Architects
61 N. Dunn St.
Eupora, MS 39744

RE: Madison Co. Courthouse – Electrical / Data Upgrades to Courtroom
Canton, MS

Dear Mr. Bjorgum,

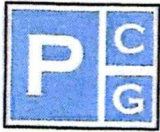
We are sincerely pleased to have the opportunity to propose the Courtroom-Electrical / Data Upgrade work for the project referenced above. Our price to provide construction services for the described work, which includes required labor, materials, equipment, supervision, and required insurances, is \$14,325.00 Fourteen Thousand three hundred twenty five dollars and no cents

This proposal includes the work indicated during the site visit, which took place Tuesday, April 27, 2015, and more specifically as described in our attached "Statement of Work and Qualifications".

Thank you in advance for allowing our firm to propose the construction services and we look forward to working for you on this project. Please contact me at your convenience with any questions you may have.

Kindest regards,
Paramount Construction Group, LLC

Jonathan McDaniel



PARAMOUNT
CONSTRUCTION
GROUP, LLC

234 West School Street, Suite B • Ridgeland, MS 39157 • 601-427-5454 office • 601-427-5456 fax

**STATEMENT OF WORK
And
QUALIFICATIONS**

Madison Co. Courthouse
Canton, MS

BUILDING WORK SUMMARY:

Paramount Construction Group proposes to perform the following summary of work by providing all labor, materials, tools and equipment, supervision and required field overhead. Generally described; the scope of work priced is for the electrical and data upgrades are per conversations onsite April 27, 2015 during the progress meeting.

New work consists of the following:

Interior:

- Demo – Remove plywood in areas needed for E.M.T. conduit and electrical boxes
- Rough Carpentry – replace plywood as needed
- Electrical – add specified floor boxes, conduit, and subpanel box to accommodate new electrical, media, and data outlets
- Wiring for electrical power (floor boxes to new electrical sub-panel)
- Pull strings only in Data and Media conduits
- Media and Data Conduits sized to accommodate (7) individual Cat 5 cables
- (3) Conduits total to floor box
- Additional Conduit from Conference Table to Attorney Tables

Exclusions:

- Replacement of any substructure beneath the plywood

Keith Dampier Electrical, Inc

"If you are in the dark, let me put you in the light"

Quote: Madison County Courthouse

Materials: Floor Boxes	\$ 6,128.00
EMT / Panel Box	\$ 1,265.00
Labor / Equipment:	\$ <u>2,232.00</u>
Total:	\$ 9,625.00

Excluded: Sales Tax

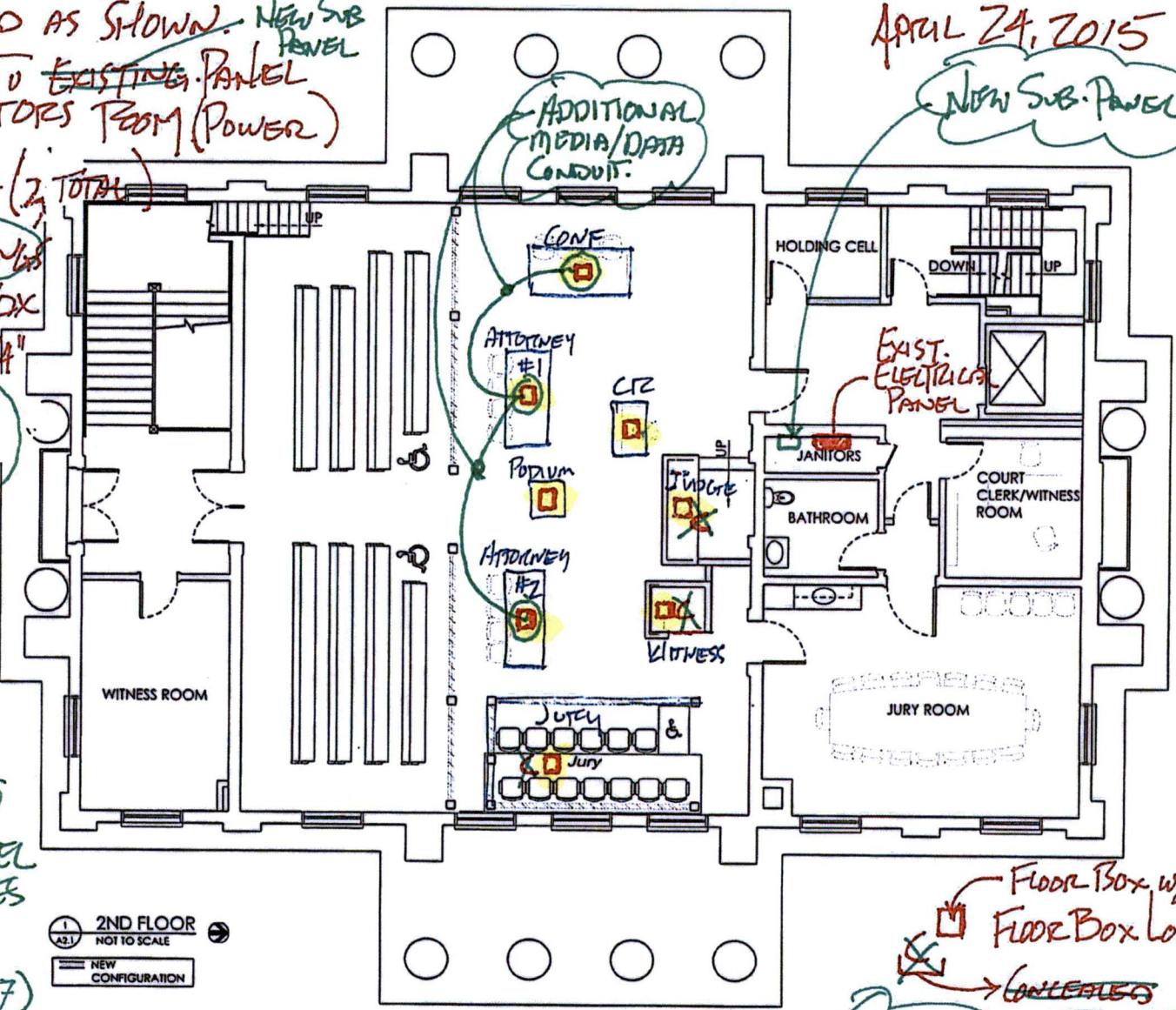
MADISON COUNTY COURTROOM
ELECTRICAL @ COURTROOM
APRIL 24, 2015

4/30/15

- PROVIDE & INSTALL FLOOR BOXES FOR FUTURE (POWER/DATA/MEDIA/AUDIO) @ SHOWN LOCATIONS. FINISHED OR CONCEALED AS SHOWN. ^{NEW SUB PANEL}
- CONNECT TO ~~EXISTING~~ PANEL IN JANITORS ROOM (POWER)

- RUN CONDUIT (2 TOTAL) w/ PULL STRINGS TO EACH BOX
(1) POWER 3/4"
(1) DATA 1"
(1) MEDIA 1"

- RUN DATA & MEDIA BACK TO JUDGE'S BENCH.
- RUN POWER TO NEW SUB-PANEL FROM FLOOR BOXES
- CONDUIT LARGE ENOUGH FOR (7) CAT 5 CABLES. w/ PULL STRINGS ONLY.



NEW SUB-PANEL

ADDITIONAL MEDIA/DATA CONDUIT.

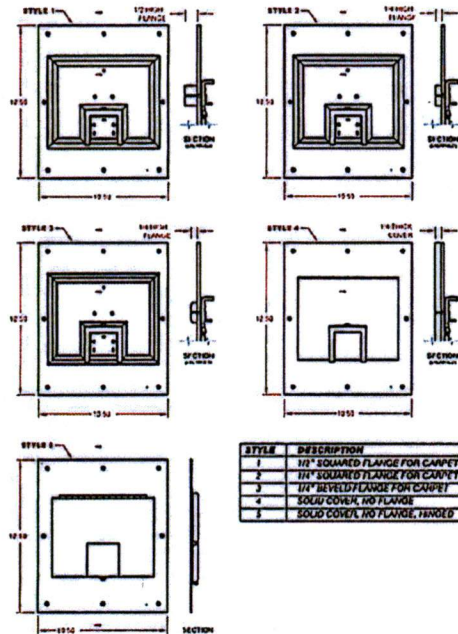
EXIST. ELECTRICAL PANEL

2ND FLOOR
NOT TO SCALE
NEW CONFIGURATION

FLOOR BOX w/ TRIM.
FLOOR BOX LOCATION
CONDUITS

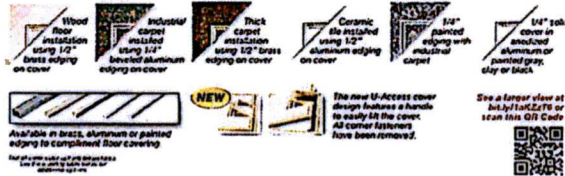
* 8 FLOOR BOXES TOTAL

COVER DETAIL DRAWINGS



STYLE	DESCRIPTION
1	12" SQUARED FLANGE FOR CARPET OR TILE
2	14" SQUARED FLANGE FOR CARPET OR TILE
3	14" BEVEL FLANGE FOR CARPET
4	SOLID COVER, NO FLANGE
5	SOLID COVER, NO FLANGE, CHAMFER

COVER OPTIONS



Available in brass, aluminum or painted edging to complement floor covering

The new U-Access cover design features a handle to easily lift the cover. All corner fasteners have been removed.

See a larger view at bit.ly/1K2Z796 or scan this QR Code

For more information visit www.fsr.com

Floor Box Covers and box bottom edging information

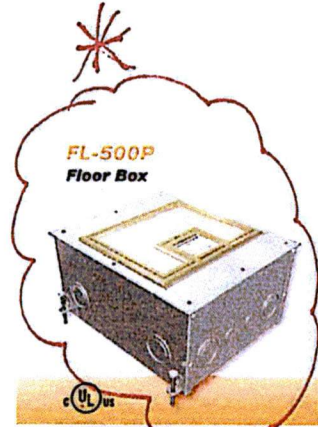
FL-500P - Requires ordering Cover and box bottom separately

Part #	Description
U-Access Covers - UL Scrub Water Rated for Tile and Carpet Installations	
FL-500P-3FC-U-Access	FL-500P Cover With 1/2" Brass Square Flange (Lift off door)
FL-500P-3SD-U-Access	FL-500P Cover With 1/2" Brass Square Flange (Lift off door)
FL-500P-3C-U-Access	FL-500P Cover With 1/4" Aluminum Square Flange (Lift off door)
FL-500P-3FC-U-Access	FL-500P Cover With 1/2" Aluminum Beveled Flange (Lift off door)
FL-500P-3SD-U-Access	FL-500P Cover With 1/2" Aluminum Square Flange (Lift off door)
FL-500P-3FC-U-Access	FL-500P Cover with 1/4" Painted Beveled Flange - Clay (Lift off door)
FL-500P-3FC-U-Access	FL-500P Cover with 1/4" Painted Beveled Flange - Clay (Lift off door)
FL-500P-3FC-U-Access	FL-500P Cover with 1/4" Painted Beveled Flange - Clay (Lift off door)
U-Access Covers - UL Scrub Water Rated - No Carpet Sites	
FL-500P-3FC-U-Access	FL-500P Solid Cover w/ Cable End Flange - Aluminum
FL-500P-3SD-U-Access	FL-500P Solid Cover w/ Cable End Flange - Black
FL-500P-3FC-U-Access	FL-500P Solid Cover w/ Cable End Flange - Clay
FL-500P-3SD-U-Access	FL-500P Solid Cover w/ Cable End Flange - Gray
Covers	
FL-500P-3FC-U	Cover (No Flange) With Hinged Door in Right Location
FL-500P-3SD-U	Cover (No Flange) With Hinged Door in Left Location
FL-500P-3FC-U	Stainless Steel Cover (No Flange) with Hinged Door
Box Bottoms - UL Listed - Includes Steel Construction Cover	
FL-500P-3FC-B	FL-500P box bottom - 3" Deep - 3" x 3" Flange Area
FL-500P-3SD-B	FL-500P box bottom - 4" Deep
FL-500P-3FC-B	FL-500P box bottom - 4" Deep
FL-500P-3SD-B	FL-500P box bottom - 4" Deep
FL-500P-3FC-B	FL-500P box bottom - 4" Deep
FL-500P-3SD-B	FL-500P box bottom - 4" Deep
Optional Box Bottom Brackets	
FL-500P-3FC-BR	2 Decoupled (Open) 180 Degree Hinged 1/2" Brass Flange (Lift off door)
FL-500P-3SD-BR	2 Single Gang (Closed) (No Decoupled) Hinged 1/2" Brass Flange (Lift off door)
FL-500P-3FC-BR	2 Single Gang (Closed) (No Decoupled) Hinged 1/2" Brass Flange (Lift off door)
FL-500P-3SD-BR	Optional Bracket for FL-500P/100P/3" - 4" Deep opening
FL-500P-3FC-BR	Optional Bracket for FL-500P/100P/3" - 4" Deep opening
FL-500P-3SD-BR	Optional Bracket for FL-500P/100P/3" - 4" Deep opening
FL-500P-3FC-BR	Optional Bracket for FL-500P/100P/3" - 4" Deep opening
FL-500P-3SD-BR	Optional Bracket for FL-500P/100P/3" - 4" Deep opening
Optional Manufacturers Specific Mounting Brackets	
MMSC-FL-500P-3	4" Green Mounting Kit
FL-500P-3	4" Green Mounting Kit
Four Pin Accessories	
FL-500P-3	3" Green Mounting Kit
FL-500P-3	4" Green Mounting Kit



244 Bergen Boulevard, Woodland Park, NJ 07424
Phone: 973.785.4347 - Fax: 973.785.4307
Web: www.fsr.com - Email: sales@fsr.com LT1014

Specifications are subject to change without notice



FL-500P Floor Box



NEW "TOOL-LESS" COVER DESIGN!

- The cable access door can be easily removed by lifting the integrated U-Access handle to quickly access the interior compartment, connectors, and cables.
- 11-gauge steel temporary construction cover included
- 11-gauge finished steel cover with choice of carpet edging
- Mitered brass or aluminum carpet edging .5" or .25" high
- Stainless steel compression latches
- Lift-off full access door

Scrub water approved for carpet, tile, and wood floors!

DESCRIPTION

Our FL-500P Floor Boxes combine rugged construction and an elegant design for use in carpet, tile, or wood covered floors over poured concrete applications. This makes it the perfect floor box for bathrooms, meeting rooms, public spaces, and high traffic areas. There is ample compartment room to accommodate power, audio, video, telecommunications, and data in one elegant and practical box.

There are a variety of covers to choose from. Options include integrated carpet edging, flat covers for non-carpeted, bare floor applications, and different finishes. The lift-off section of the cover allows full access to internal connector plates and stored cables. The hinged cable exit door flips back to allow the cover to remain in place after connections are made and cables are routed through it. The 0.25" and 0.5" raised edge style and solid covers are UL scrub water approved.

The innovation continues to the "transformable" box bottom. The FL-500P's internal brackets can be arranged to provide numerous options for both high and low voltage standard gang openings, making it the most flexible and easiest to install floor box available. Removable center dividers make passing cables through the various compartments a snap. Integral "Easy Pour" leveling feet are standard on all of the boxes. Several box depths are available. The 3" through 10" deep boxes are UL listed.

The unit includes all of the necessary internal plates and brackets to make "pre" and "post" pour compartment changes quick and easy. Using this system, both high and low voltage gang configurations, along with fire voltage compartment isolation, can be implemented "on the fly". This makes just about any cabling / connector scenario possible.

SPECIFICATIONS

Size:	Box: 10" x 12" x depth
	Cover: 10.5" x 12.5" x .125"
Flanging:	Height: .25" or .5"
	Material: Brass or Aluminum
	Flat and Solid Covers also available

KNOCKOUT SPECIFICATIONS

FL-500P-2.25"	Qty/Box
KO trade size	
1/2" / 3/4" Concentric	12
FL-500P-3"	
KO trade size	Qty/Box
3/4"	4
1"	4
3/4" / 1" Concentric	8
1" / 1-1/4" Concentric	4
FL-500P-4"	
KO trade size	Qty/Box
3/4"	8
1.00" / 1-1/4" Concentric	4
1.00" / 1-1/4" / 1-1/2" Concentric	8
FL-500P-6" thru 10"	
KO trade size	Qty/Box
3/4"	8
1.00" / 1-1/4" / 1-1/2" Concentric	12

BOX BOTTOM DETAIL DRAWINGS

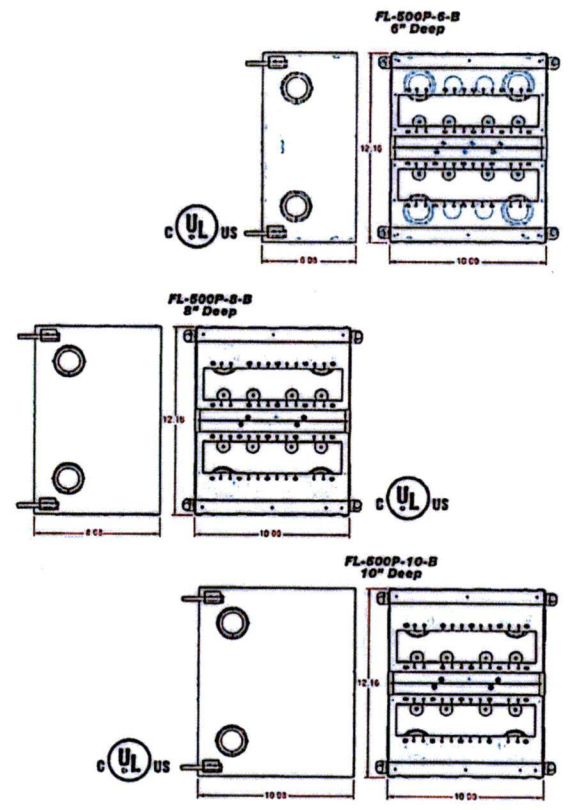
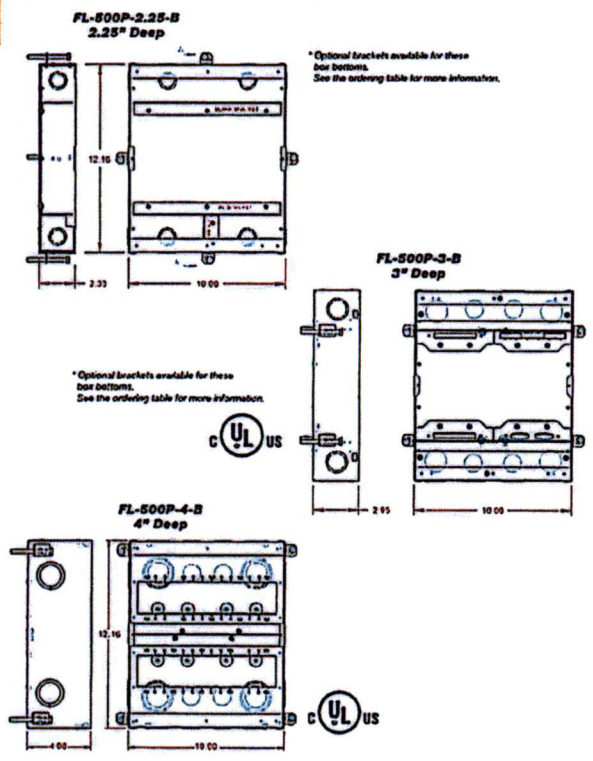
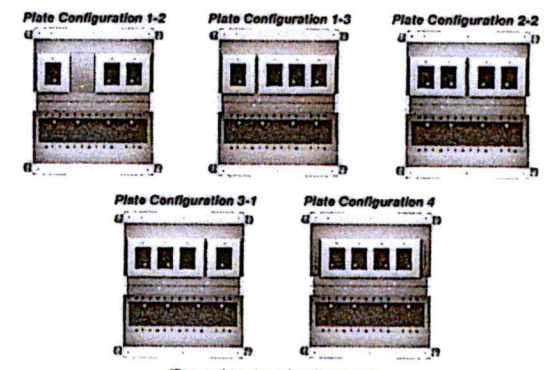


PLATE CONFIGURATIONS

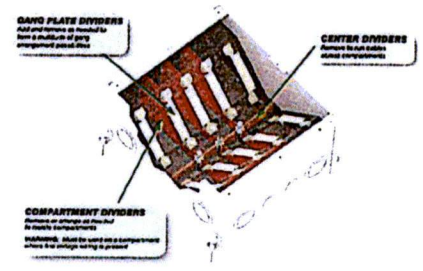
The box contains two identical brackets and either side can be configured as shown using the included parts.

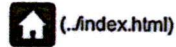


**Decorative plates shown for reference only.*

FL-500P "TRANSFORMABLE" BOX BOTTOM

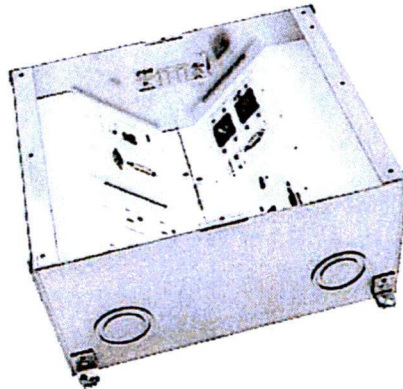
Only on 4" through 10" box bottoms.





FL-500P

FSR's Flagship UL Listed Floor Box!

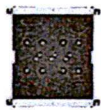


The FL-500P floor box combines rugged construction and an elegant design for use in carpet, tile or wood covered floors over poured concrete applications. This floor box has ample compartment room to accomodate power, audio, video, telecommunications and data in one elegant and practical box.

The FL-500P floor box is not only UL and CUL Listed but has also passed the latest UL test for scrub water. Because of FSR's unique engineering and manufacturing ability, FSR floor boxes pass for carpeted floors as well as tile and wood! The lift-off section of the cover allows full access to internal connector plates and stored cables, and the smaller hinged cable access door flips back to create the cableexit. When the floor box is not in use, the cover is completely closed allowing unencumbered travel in the area with only the handmitered, elegant carpet edge visible. The low profile edging is 1/4" or 1/2" high and is available in brass or aluminum.

The innovation continues to the **configurable** back box. The FL-500P's internal brackets can be arranged to provide numerous options for both high and low voltage standard gang openings making it the most flexible and easiest to install floor box available. The FL-500P floor box is designed to handle the rigors of a floor environment and still maintains flexibility and elegance.

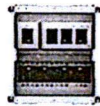
Plate Configuration Options



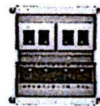
(../images/fl-500p-no-gang-plates.jpg)



(../images/fl-500p-plate-config-1-2.jpg)



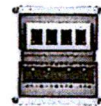
(../images/fl-500p-plate-config-1-3.jpg)



(../images/fl-500p-plate-config-2-2.jpg)

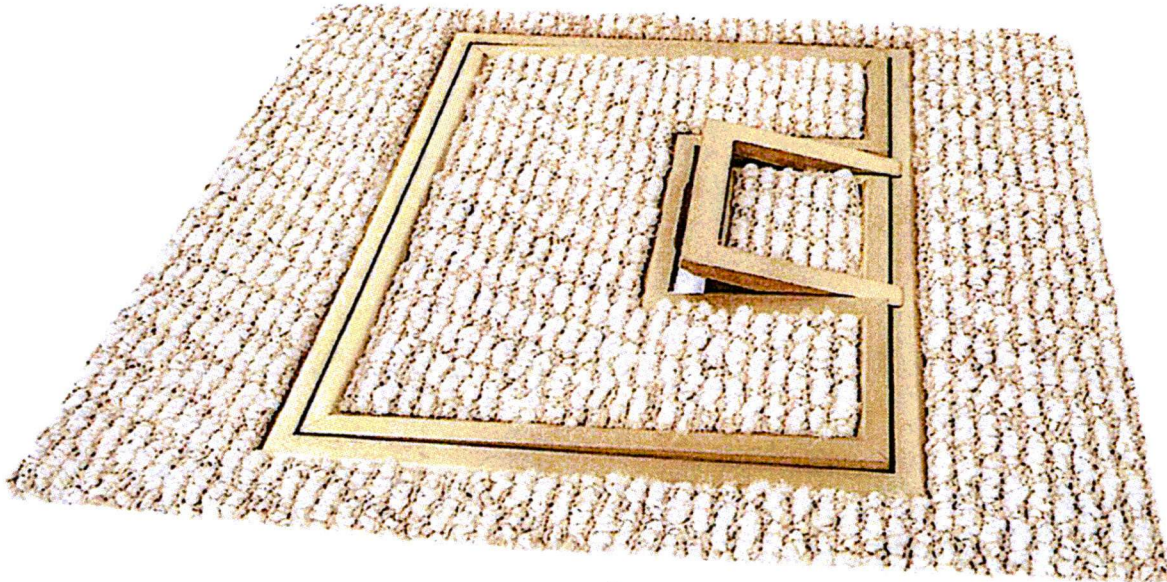


(../images/fl-500p-plate-config-3-1.jpg)



(../images/fl-500p-plate-config-4.jpg)

Ask FSR Sales about our New U-Access Cover Design



KNOCKOUT SPECIFICATIONS



FL-500P-2.25"	QTY/BOX
KO TRADE SIZE	
1/2" / 3/4" CONCENTRIC	12
FL-500P-3"	QTY/BOX
KO TRADE SIZE	
1/2"	8
1.00" / 1-1/4" CONCENTRIC	4
FL-500P-4"	QTY/BOX
KO TRADE SIZE	
3/4"	8
1.00" / 1-1/4" CONCENTRIC	4
1.00" / 1-1/4" / 1-1/2" CONCENTRIC	8
FL-500P-6" THRU 10"	QTY/BOX
KO TRADE SIZE	
3/4"	8
1.00" / 1-1/4" / 1-1/2" CONCENTRIC	12

Bracket set for FL-500/540-4" Crestron DM-TX Installation (<http://www.fsrinc.com/innerHTML/mfrcrestron.html>)



(../images/productPhotos/FL-5X0P-CRST-DMx.jpg)



BIM
OBJECTS

(<http://www.arcad.com/bim/fsrinc/fsrinc.shtml?coid=40389>) Click on the icon to check out FSR BIM

Notes: This floor box is not applicable for direct contact with grade (soil or gravel). For grade applications, use the FL-GRD2/4 (<ftp://doelib.fsrinc.com/Floor%20Boxes/FL-GRD2,%204%20Pour%20Pan/LIT1089%20FL-GRD2-4%20SPEC%20SHEET.pdf>) pour pan as a foundation before box installation.

The Floor Boxes are available in the following depths: 2.25, 3, 4, 6, 8, 10"
Gang configuration for the 4, 6, 8, 10" box is shown to the right.

The 2.25 (<ftp://doclib.fsrinc.com/Floor%20Boxes/FL-500P/Drawings/FL-500P-2.25.pdf>) and 3 (<ftp://doclib.fsrinc.com/Floor%20Boxes/FL-500P/Drawings/FL-500P-3-B.pdf>)" depths have special gang configurations.

Each floorbox comes with a temporary construction cover. Please view the finished cover choices below. Boxes and covers are sold separately.

These floor boxes are designed for the UL safety standard for scrub water. The standard only applied to boxes installed in concrete, not raised access boxes.

6, 8, 10" - U.S. PAT. 7,989,710

Applications:

- Hotel Lobbies
- Conference Centers
- Board Rooms
- Cruise Ship
- Anywhere an upscale, richly finished look is required

U-Access Covers: (Click for larger view) (Covers pictured will vary from actual size, these are for illustrative purposes only)



(<ftp://doclib.fsrinc.com/Floor%20Boxes/FL-500P/LIT10471%20FL-500P%20SPEC%20SHEET.pdf>) Data Sheet
 (<ftp://doclib.fsrinc.com/Floor%20Boxes/FL-500P/>) Additional Files
 (<ftp://doclib.fsrinc.com/Floor%20Boxes/FL-500P/LIT10471%20FL-500P%20SPEC%20SHEET.pdf>)



Standard Estimate Report
Madison County - Electric

Item	Description	Takeoff Qty	Labor		Material		Subcontract	Equipment	Other	Total
			Unit Cost	Amount	Unit Cost	Amount				
01-00-00 GENERAL CONDITIONS										
01-31-13 PROJECT MANAGEMENT										
45	Project Superintendent	2.00 day	261.50 /day	523	-	-	-	-	-	523
65	Laborer - Skilled	16.00 hr	18.341 /hr	309	-	-	-	-	-	309
65	Laborer - Skilled	16.00 hr	18.341 /hr	309	-	-	-	-	-	309
65	Laborer - Skilled	16.00 hr	18.341 /hr	309	-	-	-	-	-	309
PROJECT MANAGEMENT				<u>1,451</u>						<u>1,451</u>
64.00 Labor hours										
GENERAL CONDITIONS				<u>1,451</u>		<u>0</u>	<u>0</u>		<u>0</u>	<u>1,451</u>
64.00 Labor hours										
06-00-00 WOOD & PLASTICS										
06-10-53 ROUGH CARPENTRY										
05	Rough Carpentry	1.00 ls	-	-	300.00 /ls	300	-	-	-	300
ROUGH CARPENTRY						<u>300</u>				<u>300</u>
WOOD & PLASTICS				<u>0</u>		<u>300</u>	<u>0</u>		<u>0</u>	<u>300</u>
26-00-00 ELECTRICAL										
26-05-05 ELECTRICAL										
05	Electrical Bid / ls	1.00 ls	2,232.00 /ls	2,232	-	-	-	-	-	2,232
ELECTRICAL				<u>2,232</u>						<u>2,232</u>
26-05-33 RACEWAY & BOXES										
15	Boxes Sub / Ea	8.00 ea	-	-	765.98 /ea	6,128	-	-	-	6,128
620	1gang Device Box	1.00 ea	-	-	1,265.00 /ea	1,265	-	-	-	1,265
RACEWAY & BOXES						<u>7,393</u>				<u>7,393</u>
ELECTRICAL				<u>2,232</u>		<u>7,393</u>	<u>0</u>		<u>0</u>	<u>9,625</u>



Standard Estimate Report
Madison County - Electric

Estimate Totals

Description	Amount	Totals	Hours	Rate	Cost Basis	Cost per Unit	Percent of Total
Labor	3,683		64,000 hrs				25.71%
Overtime Adder					C		
burden Field Mnet	377			25.000 %	C		2.63%
Material	7,693						53.70%
Subcontract							
Equipment							
Other							
Material Sales Tax	501				C		
Contractors Tax	12,254	12,254		3.500 %	T		3.50%
							85.54
							85.84%
Contingency	43				T		
Builders Risk	159			0.350 %	T		0.30%
W & P Bond - PCG	202	12,456			B		1.11%
							1.41
							86.95%
Profit and Overhead	1,869			15.000 %	T		
Total		14,325					13.04%